

A modern hostel reception area with a black and white checkered floor, large windows, and a wooden reception desk. A man is standing at the desk, and a woman is working behind it. A bicycle is parked near the windows, and a large potted plant is in the foreground. The ceiling is dark with exposed pipes and modern pendant lights.

WELCOME TO HOSTEL G PERTH

Live your best life at Hostel G Perth, Perth's trendy hostel that blends art, design, cuisine and community. We're bringing you next level Perth accommodation that's as comfortable and cool as it is affordable and accessible. Free high-speed Wi-Fi, charging sockets galore, and plenty of big burgers and local brews... we've got you covered.

NOT YOUR TYPICAL HOSTEL IN PERTH



#GROUPS! GROUPS! GROUPS!

Travelling with a group and need a place to stay? Hostel G has all your group needs covered. Schools, social sports teams, youth groups, weekend trips with your mates & family and everything in between. You name it, we've got it!

Oh, and did we mention we're in the heart of Perth? Making us central to Perth transport, sports stadiums, cultural and entertainment districts and a range of trendy restaurants. Hold your rideshare apps and contact our team at Hostel G instead for a personalised offer that best suits your group's needs.

WHY YOU SHOULD BOOK YOUR GROUP WITH HOSTEL G

Hostel G can accommodate for all from 10 to 200 people. No need for any extra fuss, we've even got a dedicated team member, Michelle, who's here to help you from start to finish to ensure you're all living your best life — that includes group leaders! Keycard issues? Need some extra room spritzing? Let us take care of it! A 24-hour reception team is at your service, so should you have any issues or emergencies, we'll be able to get it fixed right away.

CONTACT MICHELLE
sales@hostelgperth.com

#GROUP PERKS

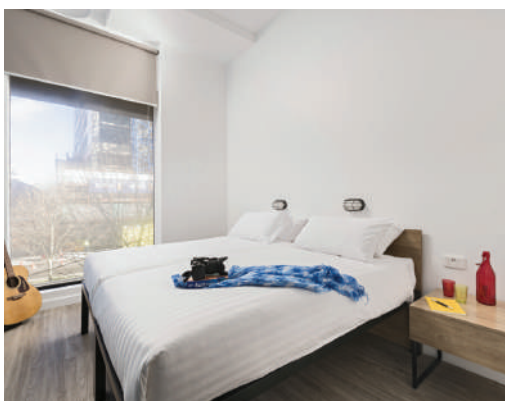
- 👤 Group rates
- 👤 Dedicated team member
- 🔒 Group safety & security
- 🚿 En-suite & private bathrooms
- 🍽 On-site catering
- 🏠 Access to all facilities
- 🕒 24 hour reception
- 🛏 Exclusive rooms, space & privacy

#AWARDS



IF YOU NEED IT PRIVATE WE HAVE IT!

#PRIVATE ROOMS



GREAT ROOM

Our private Great Room is great (see what we did there?) for couples, friends & group leaders travelling together. Get the buzz of a hostel while still having your own private space to retreat to, complete with an en-suite bathroom.

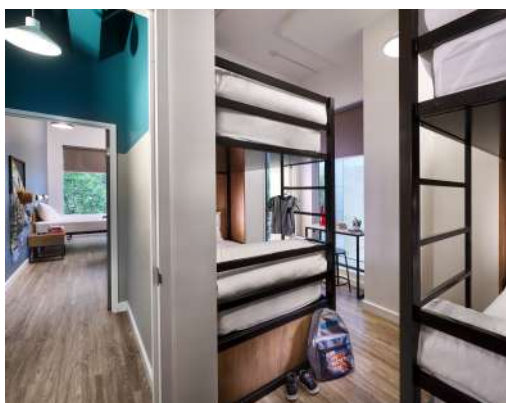
Max capacity: 2 / SQM : 17m2



GREATEST ROOM

With different variations of twin beds and bunks beds, this is called our Greatest Room for a reason! When travelling as a group, this fresh 25-square-metre room with a private bathroom gives you plenty of space to spread out.

Max capacity: 4 / SQM : 25m2



GREATEST SUITE

The 37-square-metre Greatest Suite comfortably fits a group of six or an adjoining room with two twins and two sets of bunks beds, in two bedrooms connected to an en-suite bathroom.

Max capacity: 6 / SQM : 37m2

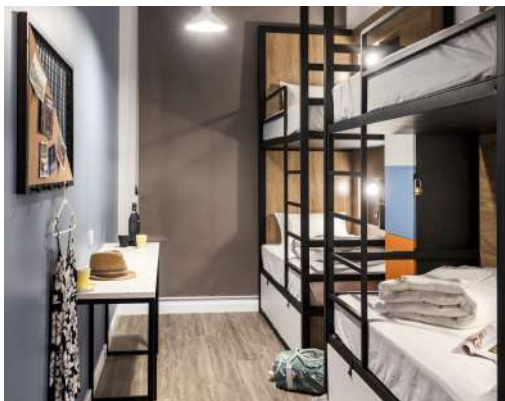


BATHROOMS

Say goodbye to communal bathrooms! Keep the dirty laundry to yourselves with a private bathroom within every room to freshen up after a whole day out and about.

OR IF YOU NEED IT SHARED WE ALSO HAVE IT!

#SHARED ROOMS



GOOD SHARED 4

Mix and mingle in our Good Shared 4 rooms. With two bunks fitting up to 4 people, these comfy rooms come with a bathroom and storage lockers for a low-cost, no-stress stay.

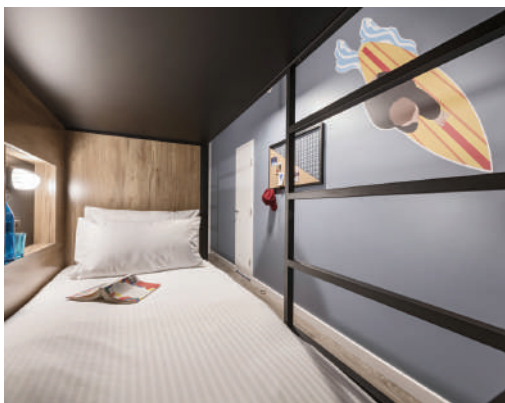
Max capacity: 4 / SQM : 16m2



GOOD SHARED 4 XL

Love the Good Shared 4 but need a bit more space? Our Good Shared 4 XL are 8sqm larger than the Good Shared 4 and come with a desk, a bathroom and storage lockers for a low-cost, no-stress stay.

Max capacity: 4 / SQM : 21m2



GOOD SHARED 6

Save even more money when staying in our Good Share 6 dorm. Featuring three bunks fitting up to 6 people, these bright and clean rooms are what Goldilocks would choose: not too big, not too small - they're just right.

Max capacity: 6 / SQM : 23m2



GOOD SHARED 8

Say g'day to our Good Shared 8, you're bound to share some good memories in here. With four bunks, this is the perfect fit for groups who want to go large. Privacy curtains and storage lockers mean your stuff is kept safe, so...sleep tight!

Max capacity: 8 / SQM : 30m2

ALL THE COMFORTS YOU CAN DREAM OF

#COMPLIMENTARY

- 👤 24-hour reception and security
- ❄️ Air-Con
- 🔒 Large in-room + bed lockers
- 📶 Superfast Wi-Fi
- 🧳 Luggage storage
- 🚲 Bike storage
- 🛏️ Bed linen
- 🔌 USB & Electrical ports
- 🍳 Pantry
- 🎬 Screening room
- 🎮 Game & VR stations



#CHEAP AS CHIPS

- 🧻 Towel
- 🚽 Toiletries
- 🔒 Padlock
- 🔌 Power adapter
- 🧺 Self-service laundry
- 🍔 Lazy Lee Burger Bar
- 🚲 Bike for hire
- 🍷 G Shop in Reception
- 🗺️ City Tours & Experiences



Located on the first floor, Lazy Lee Burger Bar is Hostel G's on-site restaurant with a delicious menu serving burgers and local brews that won't break the bank. Lazy Lee caters to all with a group booking menu that's available for breakfast, lunch and dinner.



HOW TO GET HERE

LOCATION

OF HOSTEL G

Smack bang in the middle of the cultural and entertainment precinct of Northbridge and the bustling central business district of Perth City is where you'll find us! Perfect for your everyday group who wants a no-fuss, stress-free way of travelling within Perth.

#TRANSPORTATION

AIRPORT

- T1/T2: Bus number 380
- T3/T4: Bus number 40. Stop at St Georges Terrace/Irwin St and 12 minute stroll
- Car/Rideshare: 17 minute drive

PERTH CBD

- From Perth Train Station: 8 minute walk
- From Wellington St Bus Station: 8 minute walk
- From Elizabeth Quay Station: Bus routes 41, 48, 55, 60, 67, 68, 950

Visit www.transperth.com for further details on Perth's public transportation system and journey planner. If you are in need of a taxi or car to and from Hostel G, please contact our friendly team at reception.





HOSTEL G PERTH
80 STIRLING STREET, PERTH WA 6000
+61 8 6559 3830
WWW.HOSTELGPERTH.COM
f @HOSTELGPERTH